



CFM

Coral Fault Manager

Tadiran's Network-Wide Communications Guard



Tadiran Telecom

CFM

Relax. Your Coral is in

Communications. Too Important to Leave to Chance.

As your Coral communication network grows, the task of watching over every element becomes more complex. Yet every successful enterprise relies on dependable communications. This is the crucial resource you cannot leave to chance.

That's where Tadiran's Coral Fault Manager comes in.

Coral Fault Manager

The Coral Fault Manager (CFM) offers an at-a-glance global view of the health of your entire Coral network, while allowing:

- **Network-wide accessibility**
You can access the CFM via the web from any network location
- **Real-time fault detection**
CFM detects any faulty element in your Tadiran communications network
- **Rapid assessment of fault severity**
Severity assessment allows you to focus on the most critical problems first
- **Early detection for efficient preventive maintenance**
Many faults may be handled before users experience operational malfunction
- **Alarm event alerts sent via email or SMS message**
So you are immediately informed of any alarm event over a specified level of severity
- **Fast troubleshooting**
Offers corrective measures for specific alarm events
- **Alarm database**
Database detailing current alarm status and alarm history allows the generation of customizable reports and assists in troubleshooting

CFM

Relax. Your Coral is in the most Capable Hands.

- **Reliability** – Tadiran's experience combined with extremely reliable technologies and architecture ensures optimal reliability. Optional CFM redundancy configuration is also available.
- **Scalability** – CFM supports the monitoring of up to 250 Coral systems.
- **Easy to operate** – The modern, web-based GUI allows intuitive use with minimal training.

The CFM is part of Tadiran's suite of management applications. The full management suite includes applications for configuration management and administration, performance management and billing.

the most Capable Hands.

How does it work?

Whenever there is an alarm event, the Coral responds by sending an alert through an IP network to the CFM server application. The CFM filters out redundant alarm information and assigns a severity value to the alarm. If the severity is above zero, it:

- Updates current alarm status
- Recalculates overall alarm status of relevant Coral
- Sends an email or SMS, according to the severity of the alarm event
- Records alarm event in the CFM history database

The overall alarm status change is sent as an SNMP trap to any standard SNMP NMS application program such as Castle Rock or HP Openview. The system manager can view the alarm status of all Coral Servers in the network by surfing to the NMS application server using a standard web browser.

The screenshot shows a web interface with two main tables: 'STWS' and 'SNMPS'. The 'STWS' table has columns for 'Sev. Sts', 'From', 'Message', and 'Recem. Priority Sts'. The 'SNMPS' table has columns for 'Sev. Sts', 'From', 'Message', and 'Recem. Priority Sts'. Below these tables is a section for 'SYSTEM INFORMATION' which includes details like 'System ID', 'IP Address', and 'Last Update'.

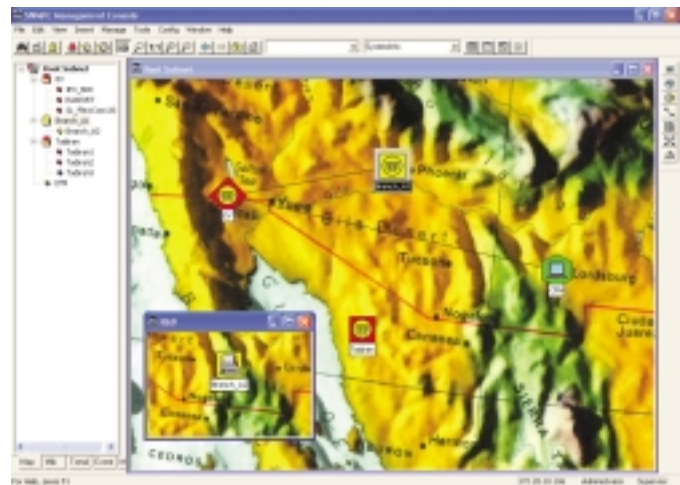
Typical color code:

- Gray - no corresponding Coral definition in the CFM; operator should call CFM technician
- Green - no active faults
- Blue - minor alarm
- Yellow - major alarm
- Red - critical alarm

The user double-clicks on an icon to go down a level, for example into a cluster of Coral Servers, then double-clicks on an individual Coral icon.

SNMP NMS - Simple user-friendly access to crucial information

The CFM interfaces with standard SNMP NMS applications. A typical program represents each Coral Server as an icon onscreen. Clusters of Coral Servers can be represented by a single icon, and groups of clusters may also be gathered under one icon. Icons may be arranged according to user preferences on a background map or diagram.



Icons are presented in different colors, according to the severity of the alarm status. The color of an icon that represents several Coral Servers is the color of the Server with the highest severity problem among the subgroup members.

This opens a URL related to that specific Coral, giving the user access to fault details within the CFM database, including:

- Name and IP address of monitored Coral
- Date/time of recent alarm information update
- Recent alarm events
- Faulty elements of monitored Coral

Some SNMP NMS programs may also send alerts via email or SMS.

Leading the Telecommunications Field with State-of-the-Art Developments

All Tadiran products benefit from the company's extensive experience and proven expertise in telecommunications. The CFM is the result of intensive development building on the latest technological advances in the field.

- The CFM-SP (Coral Fault Management SNMP Proxy) is proprietary Tadiran software running on a Linux operating system, interfacing with a standard SNMP NMS application such as Castle Rock or HP Openview. SNMP NMS background maps serve presentation purposes only and have no effect on CFM functionality.
- The CFM-SP checks a list of monitored Corals and establishes a TCP connection with each one. Failure to establish a connection triggers a specific CFM alarm event.
- CFM-SP interfaces with Coral Servers via an IP network. An STIP unit is used to convert the Coral's serial I/O to IP for transmission over the network. The STIP provides multiple simultaneous sessions for fault management, configuration management etc.
- In addition to transmitting alarm information when an alarm event occurs, each Coral Server transmits its alarm status periodically to the CFM. If the CFM does not receive this periodic status report it concludes that a critical failure has occurred.

Hardware specifications:

- CFM-SP runs on a standard PC
- Recommended – server grade platform
- A second PC if CFM redundancy is required

Sophisticated technology
Taking care of itself, so that you can concentrate on your own work



Corporate Headquarters

Tadiran Telecom Ltd.
18 Hasivim Street, PO Box 7607
Petach Tikva, 49170 Israel
Tel +972-3-9262000
Fax +972-3-9262310

USA

Tadiran Telecom Inc.
4 Tri Harbor Court
Port Washington, NY 11050 USA
Tel +516-632-7200
Fax +516-632-7210

Russia

Tadiran Telecom Ltd.
Bolshoy Cherkasskiy per., 15
Office 602, Moscow, Russia
Tel/Fax +7-095-7750855

Ukraine

Tadiran Telecom Ltd.
4 Vinogradnyi per., office 41
Kiev, Ukraine
Tel/Fax + 38-044-2532830

China

Tadiran Telecom Ltd.
Room 2101, Building 10, Jianwai SOHO
39 East 3rd-Ring Road
Chaoyang District, Beijing 100022, China
Tel +86-10-58696418
Fax +86-10-58696421

India – Liaison Office

Tadiran Telecom Ltd.
Shanti Chambers, 11/6 B, Pusa Road
New Delhi 110 005 India
Tel +91-11-25850446/25854212
Fax +91-11-25789399

Visit us at our website: www.tadirantele.com
11-2005

Copyright © 2005 Tadiran Telecom Ltd. Specifications subject to change without notice. Contact your authorized dealer for specifics. Coral, FlexAir, Coral Message Center, Coral QNet, CoralLITE, Coral FlexCT, Coral FlexiCom, Coral FlexSet, Coral FlexIP Softphone, Coral IPx and iCMC are registered trademarks of Tadiran Telecom Ltd. or Tadiran Telecom Inc. All other products or services mentioned are the trademarks, service marks, registered trademarks or registered service marks of their respective owners.